

Implant Innovation

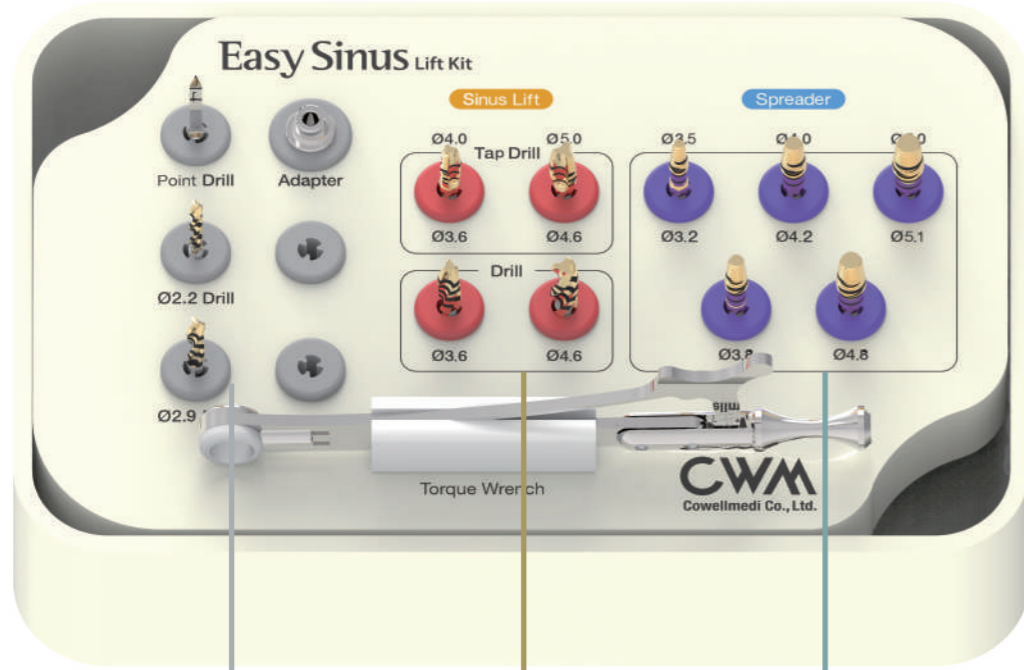
When INNOVATION meets Dental Implant..



EASY SINUS LIFT KIT

Easy Sinus Lift KIT [KSA001]

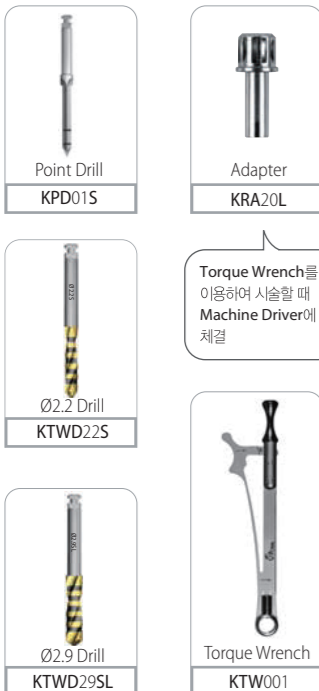
> Tap Drill을 이용하여 Sinus Lift와 Ridge Split을 할 수 있는 간편한 시술 도구



공통으로 사용되는 Tool

> Sinus Lift나 Ridge Split 시 골질에 따라 술자의 판단에 의해 선택 사용

Drill Speed : 800-2000 rpm



Torque Wrench를 이용하여 시술할 때 Machine Driver에 체결

Sinus Lift

- > 상악동 아래 소구치부에 사용되며 Sinus Window OP에 비해 간편한 시술 가능
- > 저속으로 회전하는 Tap Drill에 의해 안전하게 Sinus를 Elevation

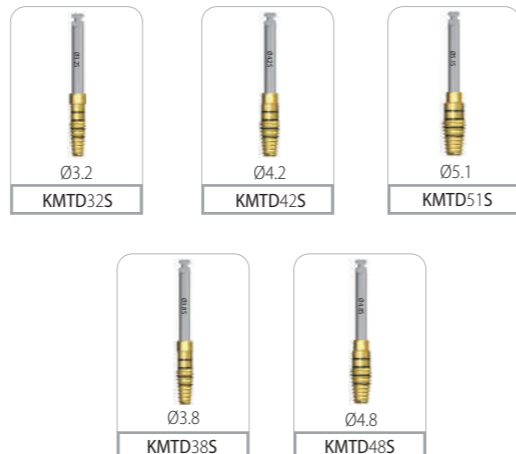
Drill Speed : 20-30 rpm
Torque : 45 N-cm



Spreader

- > 단계적으로 안전하게 Ridge Split을 실시
- > Condensing, Spreader 등의 기능을 하는 다목적 Tool

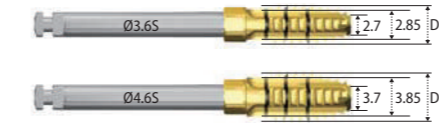
Drill Speed : 20-30 rpm
Torque : 45 N-cm



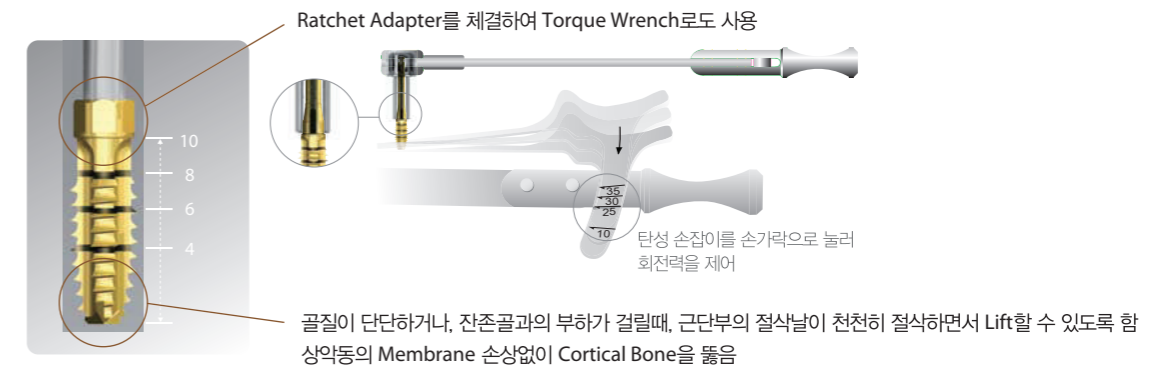
Sinus Lift

Tap Drill (Ø3.6, Ø4.6)

상악동 측 Cortical Bone을 뚫음과 동시에, Sinus Membrane을 손상없이 서서히 올리고 Bone Graft 후 Fixture를 식립 (사용시 20~30 RPM을 유지)



Diameter	Ø3.6	Ø4.6
	KMTD36S	KMTD46S



Twist Drill (Ø3.6, Ø4.6)

Tap Drill후 Fixture를 식립할 때 골질이 단단한 경우(2등급 이상)일때 사용. 필요시 나사산을 제거하여 Hole의 크기를 넓혀 줌으로써 Bone Graft를 용이하게 함 (사용시 20~30 RPM을 유지)



Diameter	Ø3.6	Ø4.6
	KTWD36S	KTWD46S



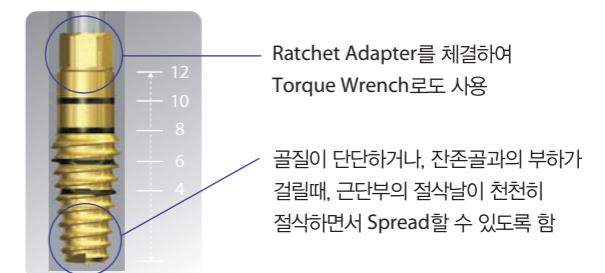
Spreader

Tap Drill (Ø3.2, Ø3.8, Ø4.2, Ø4.8, Ø5.1)

Tap Drill을 사용하여 순차적으로 Spread 할 수 있음



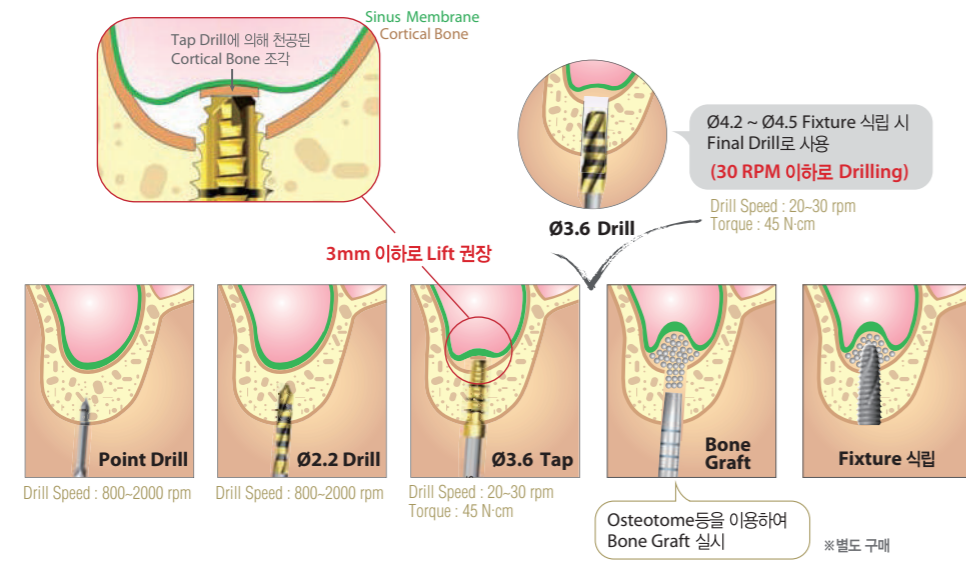
Diameter	Ø3.2	Ø3.8	Ø4.2	Ø4.8	Ø5.1
	KMTD32S	KMTD38S	KMTD42S	KMTD48S	KMTD51S



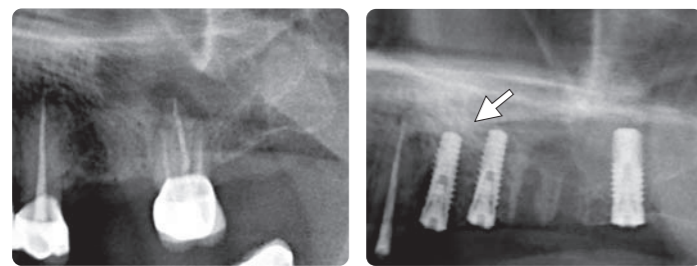
Sequence - Sinus Lift

Sinus Lift Drill만 사용

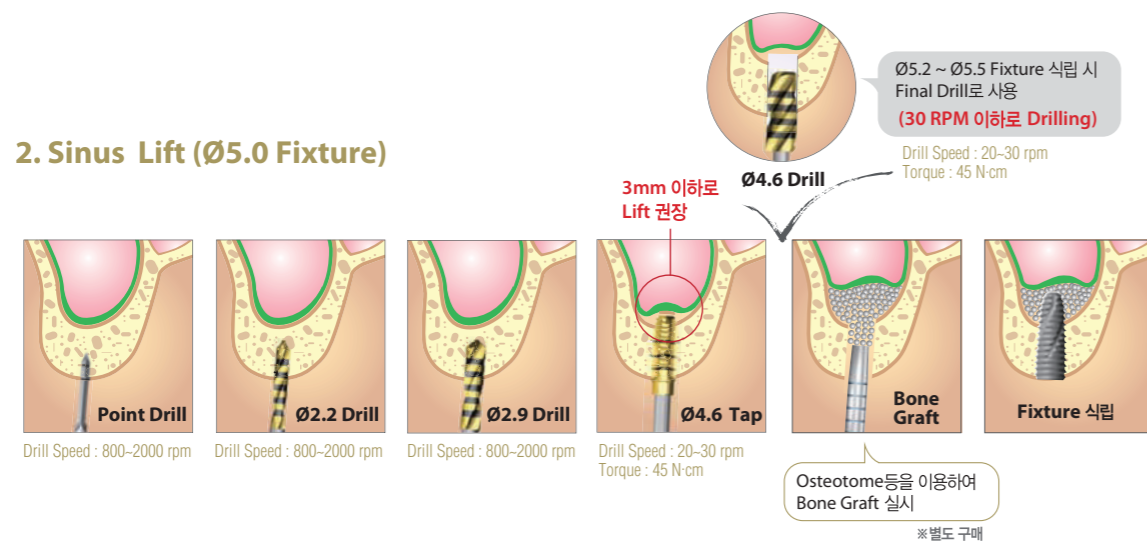
1. Sinus Lift (Ø4.0 Fixture)



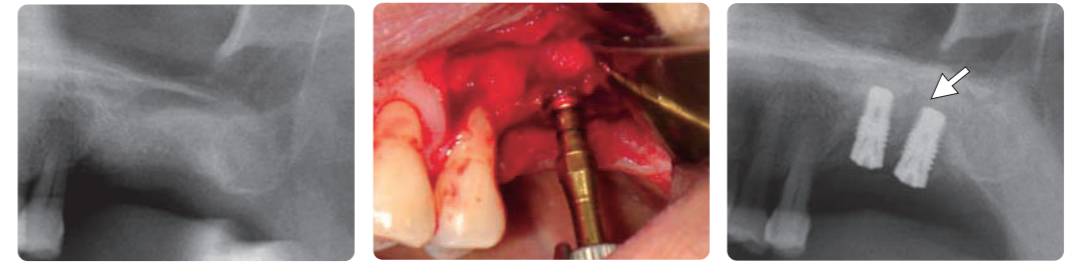
▶ Immediate Implantation and Sinus Lift Technique with Tap Drill (Ø4.0 Fixture)



2. Sinus Lift (Ø5.0 Fixture)

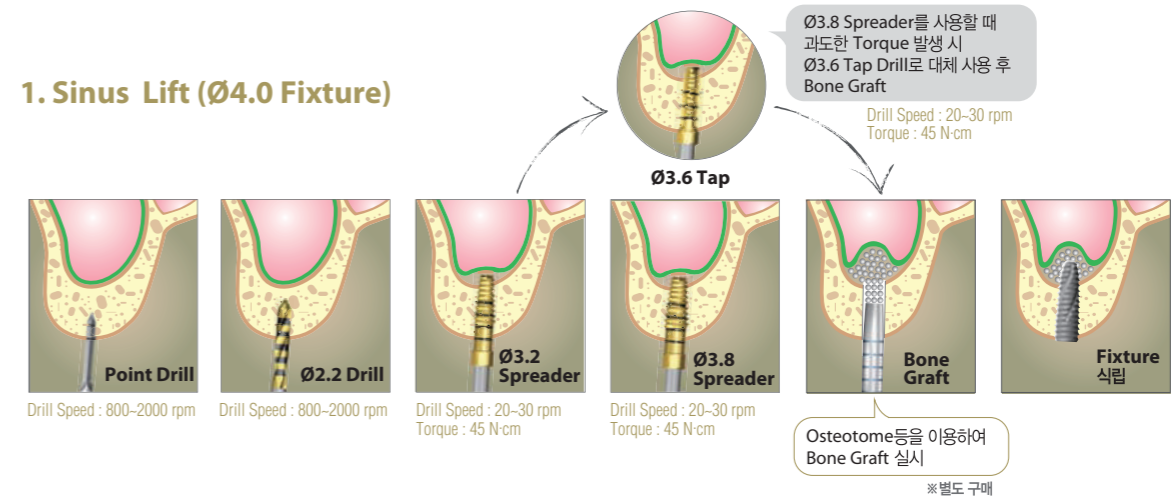


▶ Immediate Implantation and Sinus Lift Technique with Tap Drill (Ø5.0 Fixture)

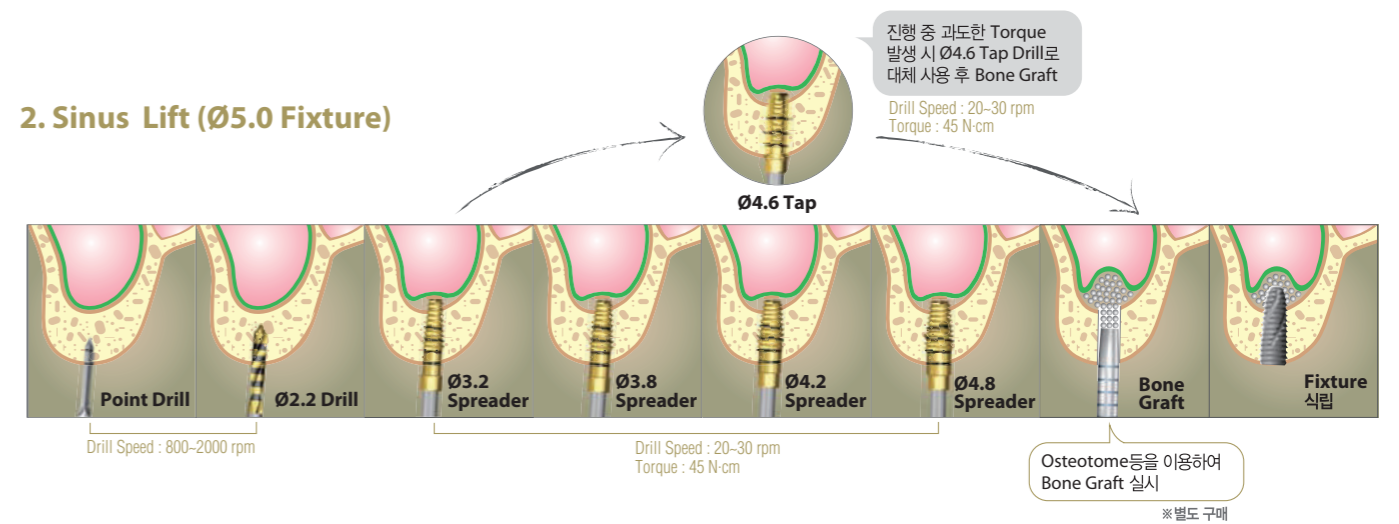


Sinus Lift Drill과 Spreader Drill를 함께 사용

1. Sinus Lift (Ø4.0 Fixture)



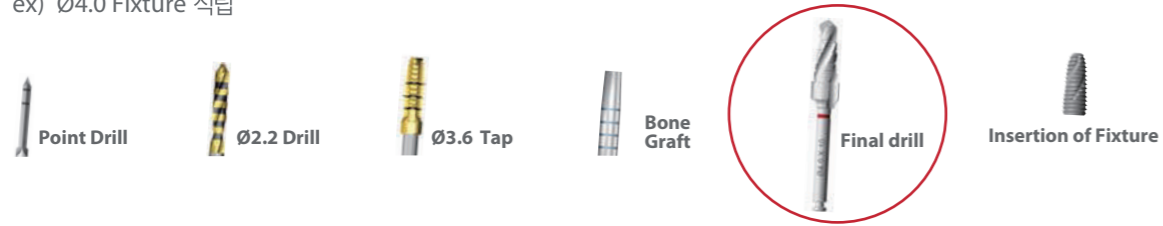
2. Sinus Lift (Ø5.0 Fixture)



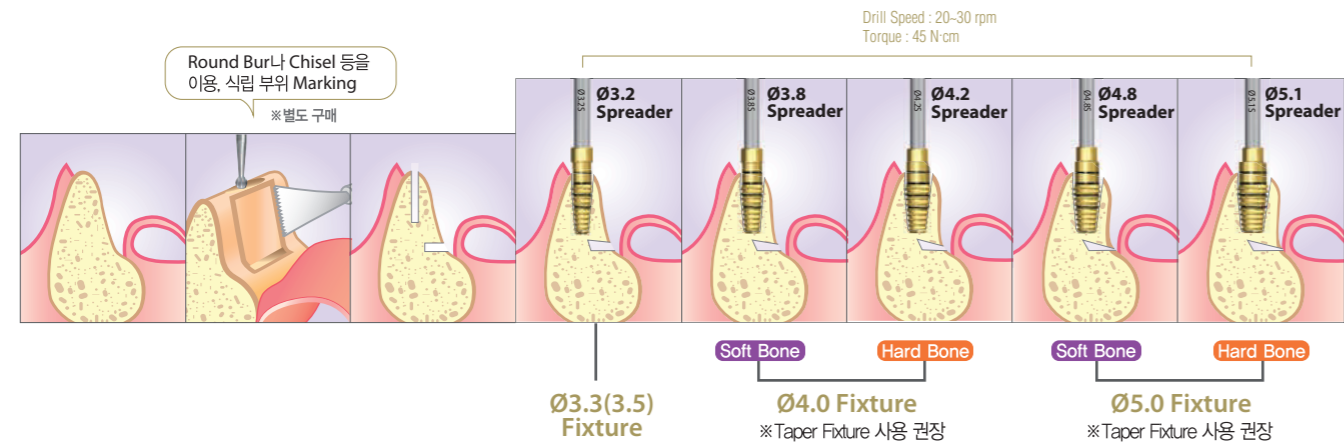
Note

- > Sinus Lift 시 Sinus Lift Drill과 Spreader Drill을 함께 사용하는 술식을 권장
- > Point Drill 대신에 Ø3.2 Spreader를 사용하여 간편하게 시술할 수도 있음.
- > 골질 D2인 경우 Fixture 식립 전에 Final Drill을 사용하여 주변 치조골을 지나치게 압박하지 않도록 함.

ex) Ø4.0 Fixture 식립



Sequence -Spreader



▶ Ridge Split and Block Bone Augmentation Technique with Spreader Drill (Ø4.0 Fixture)

